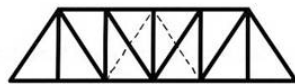


**Truss Construction Project:** In lieu of quiz on this Friday, March 3, you will be graded on the quality and creativity of your truss submission. Do not submit unless truss can successfully support the class textbook. Submitted truss that does not support text will receive a **0** grade.

Aesthetically place your name on the truss.

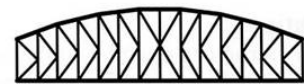
- Specifications:
  - Footprint: 3" wide 12" long
  - Height: based your truss design.
  - Material: wood, white board, plastic, chip board
  - Type: Truss type from below, text or your design based on a precedent.



Pratt



Parker



K-Truss



Howe



Camelback



Warren



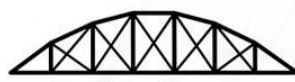
Fink



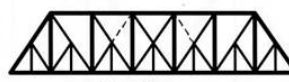
Double Intersection Pratt



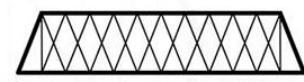
Warren (with Verticals)



Bowstring



Baltimore



Double Intersection Warren



Waddell "A" Truss



Pennsylvania



Lattice